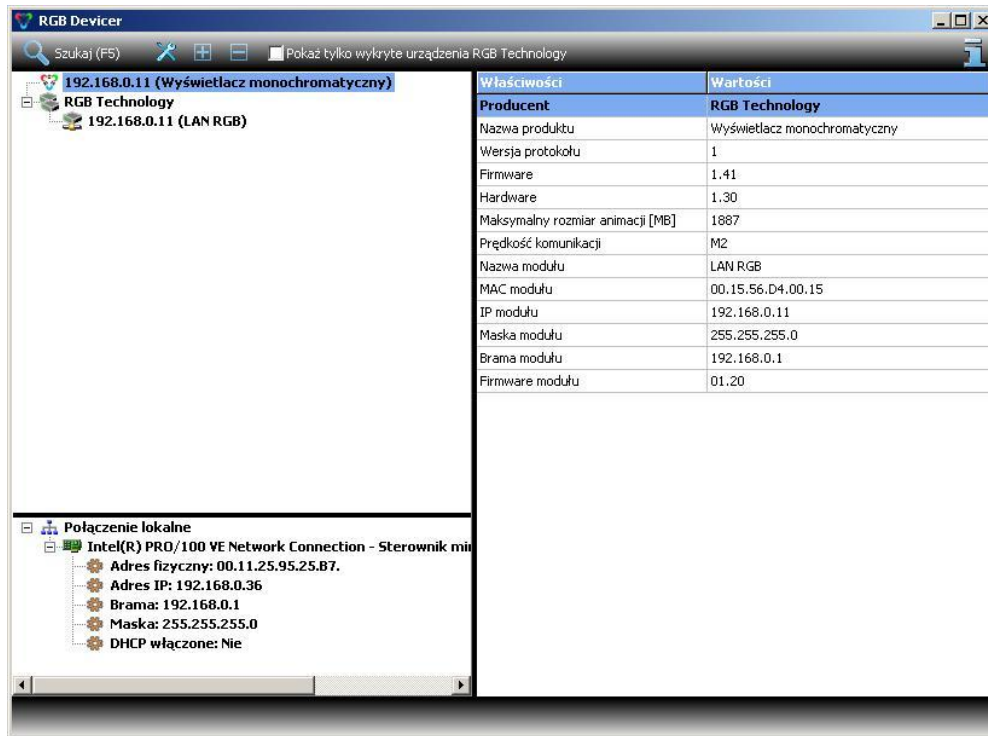


Configuration of the LAN network card (wired) in Windows 7 for Display connection.

1. From „Menu start” (left Lower corner) choose „Control Panel”. In the Control Panel in the right upper corner change the appearance „View by: Small Icons”, next click on „Network and Sharing Center”.
2. From the menu on the left side „Manage Network connections”.
3. Click with the right Mouse button on „Local Area Connection” and next choose „Properties”.
ATTENTION: If you have more network cards (ex. Wireless, Bluetooth, ADSL) please shut down (right mouse click on a connection and next choose „Disable”) all except the network where the display is connected.
4. In the window „Local Area Connection Properties” mark „Internet Protocol (TCP/IP)” and next click „Properties”.
5. In the window „Internet Protocol (TCP/IP) Properties” choose the option „Use the following IP Address” and next fill out the fields:
 - a. IP address: 192.168.0.55
 - b. Subnet mask: 255.255.255.0
 - c. Leave other fields empty.
 - d. Confirm the changes with „OK” button**ATTENTION:** If the IP address or dns have already been set up on the card copy them so you can go back to the previous settings.
6. Having set up the network adapter plug the display and place the network cable (crossover) to the network adapter in your PC.
7. The display comes from the manufacturer has default IP address: 192.168.0.11. This IP address usually should be set in the configuration program used to connect to the display (especially if it is a new product). In the case of connection problems or if we changed the IP address and don't remember it, use a program that search for display in the local network and give its IP. Programs that used to appear on CD in the catalog ... *aditional\network diagnostics* /. Due to the fact that in the device RGB Technology there are various communication modules, the disc contains a few programs. But there is one program that allows you to search different generations of communications modules - RGB Devicer. It is recommended to use this program.



In the left upper corner of the window should show the IP address of the display.

8. Display setup in RGB Technology programs:

- RGB Mono Studio
- RGB Color Studio

is in the manual of the given program, which is activated with „F1” button.

9. In case of connection problems please disconnect the following:

- a. Antivirus programs,
- b. Firewall programs,
- c. Windows 7 firewall,
- d. Check IP addresses,
- e. Disconnect other network connections (ex. ADSL, GPRS).